

GAS METAL INSERTS | FOR FIREPLACES

QUADRA-FIRE

PURE PERFORMANCE



PERFORMANCE MEETS CONVENIENCE

Direct vent gas inserts provide the warmth and glow of a real wood burning fire without any of the inconvenience. These energy efficient and AFUE rated gas inserts offer an airtight seal for peace of mind and comfort when enjoying a beautiful fire. Combine any insert with the wide range of control options and a warm, cozy room is just a flip of the switch away.

Cover: QF130 shown with Firescreen front in Sienna Bronze.
Above: QF135 shown with Firescreen front in Black.

GAS METAL INSERTS

QFI35

The QFI35 offers the look and feel of a real wood fire. Ceramic fiber logs and glowing ember bed are enhanced by the dramatic herringbone interior. The IntelliFire™ Plus system, high heat output and efficient advanced flame technology offer comfort and convenience. QFI35 shown with Affinity Arch front in Sienna Bronze.



QFI30

The QFI30 also features a herringbone refractory framing the realistic fire with large flames and a glowing ember bed. Easy-access controls allow the fan speed, flame appearance and heat output levels to be adjusted easily. QFI30 shown with Tudor Panel front in Black.



FEATURES & BENEFITS

- Beautiful, efficient fire — realistic flame and glow
- IntelliFire™ Plus advanced intermittent pilot ignition system eliminates the wasted fuel of a standing pilot system
- Standard blower to maximize your efficiency and heat output
- Choice of wireless controls makes all functions easy to use
- 50% turndown gives you control of the heat and allows you to enjoy the fire longer
- Dual variable-speed blowers for greater control and increased efficiency
- Fronts and low profile surrounds to fit any décor
- Standard herringbone refractory
- Customized sturdy grate with andirons





A NEW FIREPLACE IN FOUR EASY STEPS

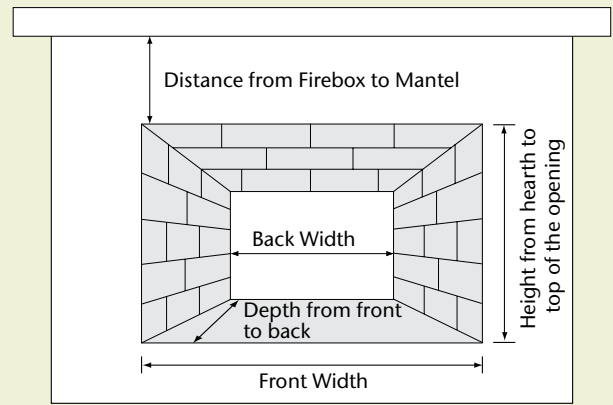
- 1) Measure your existing fireplace
- 2) Choose your insert
- 3) Choose your surround
- 4) Finish with a front

Above: QFI30 shown with Tudor Panel front in Black.

GAS METAL INSERTS

STEP 1 MEASURE YOUR EXISTING FIREPLACE

We'll need the height, width and depth of the existing fireplace opening to ensure that the proper-sized insert is selected.



STEP 2 CHOOSE YOUR INSERT

There are two main factors to consider when selecting an insert. First, consider the height of your existing fireplace opening. You'll want to choose the tallest insert that will fit into your existing fireplace. Second, consider how the insert will be used. Do you have a large room, do you want a lot of heat or a little, and how long do you plan to run the fireplace? These answers will direct you to the insert that is ideal for you and your home.



QFI35

- Minimum fireplace opening: 22-3/4" high
- Ideal size for larger firebox openings
- 35,000 Btu/Hr Input (NG)
- 7 split oak-style logs



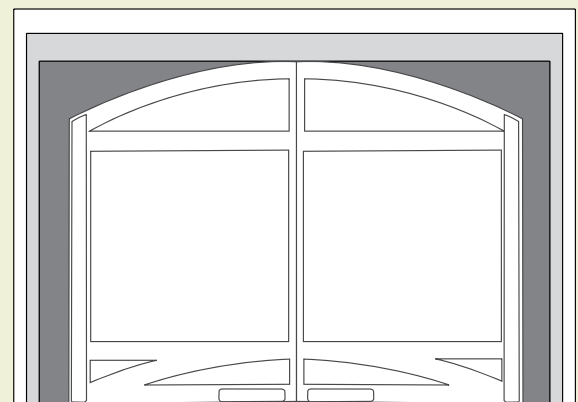
QFI30

- Minimum fireplace opening: 19-1/8" high
- Ideal size for smaller firebox openings
- 32,000 Btu/Hr Input (NG)
- 6 split oak-style logs

STEP 3 CHOOSE YOUR SURROUND

To bring a finished and polished look to your new insert you need a matching metal surround to cover the gap between the insert and your existing fireplace opening. Offered in three standard sizes and two color options including, Black and Sienna Bronze, you're sure to find the perfect fit for your space.

| SURROUND | QFI35 | QFI30 |
|----------|-----------|-----------|
| Small | 42" x 29" | 40" x 27" |
| Medium | 44" x 32" | 42" x 30" |
| Large | 48" x 32" | 44" x 32" |

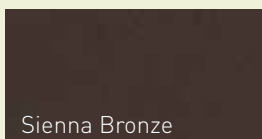
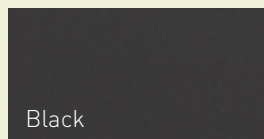


■ STANDARD SURROUND ■ MEDIUM SURROUND □ LARGE SURROUND

GAS METAL INSERTS

STEP 4 FINISH WITH A FRONT

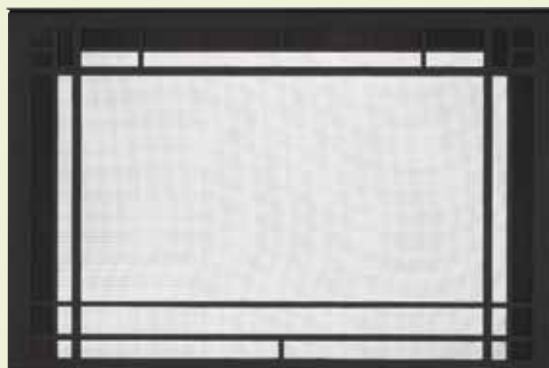
Complete your insert with a stylish front or operable door, available in two finishes.



Affinity Arch



Tudor Panel



Firescreen

All Quadra-Fire gas inserts include the IntelliFire Plus ignition system to save fuel, improve efficiency and make your fire easier to use. There is an on/off switch on each surround, and other functions can be controlled under the insert, but to take full advantage of the IntelliFire Plus system, choose one of the controls listed below.

INTELLIFIRE PLUS IGNITION SYSTEM AND WIRELESS CONTROLS



The IntelliFire Plus Ignition System is an “intelligent” control system providing energy conservation and the comfort of a roaring fire, all at your fingertips! IntelliFire Plus features intermittent-pilot ignition (IPI) allowing you to conserve fuel and money when the fireplace is not in use. Optional constant pilot mode allows you to leave the pilot flame on in cold climates. In

addition, the system offers seamless transition from AC to battery backup in a power outage, as well as built-in safety features and memory settings. Lastly, our new family of IntelliFire Plus wireless and ergonomic controls provide stylish and fully featured benefits that make controlling your heat easier than ever.

INTELLIFIRE PLUS RC300 incorporates an LCD screen, intuitive menus and large control buttons in a sleek and modern design. This wireless control gives you the flexibility to use as a remote only or mount on the wall anywhere in the room.

MODEL: RC300-QDF

FEATURES: Auto Battery Backup, Pilot Activation, On/Off, 5 Step Flame Height, Fan Speed (Auxiliary 1), Two Additional Auxiliary Functions, Room Temperature Readout, Thermostat Mode, Timer Mode, Child Lock, Wall Docking Station



INTELLIFIRE PLUS RC200 combines an easy-to-use and intuitive control panel with a stylish and ergonomic design. Since it utilizes wireless control, it has the flexibility for wall placement anywhere in the room, or use as a remote only.

MODEL: RC200-QDF

FEATURES: Auto Battery Backup, Pilot Activation, On/Off, 5 Step Flame Height, Fan Speed, Child Lock, Wall Docking Station



INTELLIFIRE PLUS RC100 features a simple, single mode function and is specifically designed for wall placement ensuring a great fire is just a tap of the switch away.

MODEL: RC100-QDF

FEATURES: On/Off




STANDARD REFRACTORY

Both the QFI35 and the QFI30 come standard with herringbone refractory.



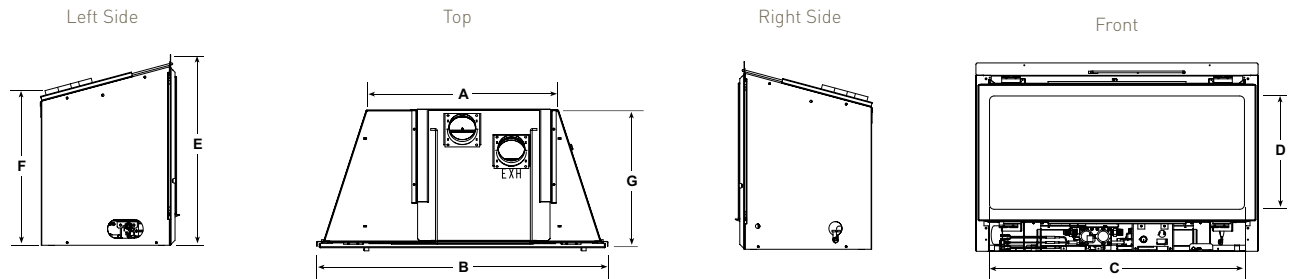
Herringbone

|  | GAS METAL INSERT SPECIFICATIONS | | | | | | | |
|---|---------------------------------|---------------------|------------------|----------------------|------------------|-------------------|-------------------|-------------------|
| | Technical Data | | | | | Performance | | |
| | Shipping Weight | Flue Size | Ignition System | Mobile Home Approved | Bedroom Approved | Btu/Hr Input (NG) | Btu/Hr Input (LP) | Convection Blower |
| QFI35 | 87 lbs | 3" x 3" Direct Vent | IntelliFire Plus | Yes | Yes | 35,000 - 18,500 | 35,000 - 17,000 | 120 cfm |
| QFI30 | 72 lbs | 3" x 3" Direct Vent | IntelliFire Plus | Yes | Yes | 32,000 - 18,000 | 31,000 - 15,500 | 120 cfm |

DIMENSIONS

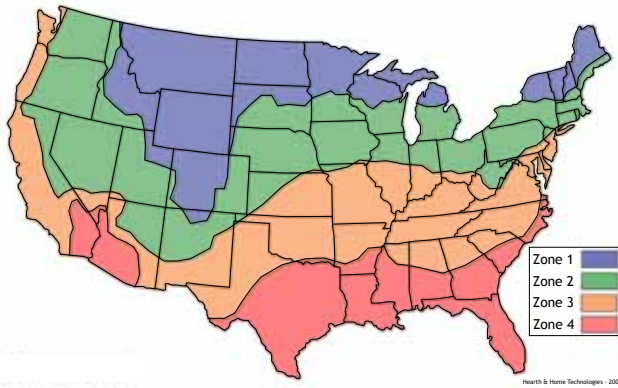
| MODEL | FRONT WIDTH | | BACK WIDTH | | HEIGHT | | DEPTH | | VIEWING AREA |
|--------|-------------|----------------------|------------|----------------------|---------|----------------------|---------|----------------------|-------------------|
| | UNIT | MIN. FIREBOX OPENING | UNIT | MIN. FIREBOX OPENING | UNIT | MIN. FIREBOX OPENING | UNIT | MIN. FIREBOX OPENING | |
| QFI-35 | 34-5/8" | 33-1/4" | 23-1/2" | 24" | 24" | 22-5/8" | 15-1/8" | 15-1/8" | 31-5/8" X 15-3/4" |
| QFI-30 | 30-1/2" | 29-1/4" | 20-1/4" | 20-1/2" | 20-1/2" | 19-1/8" | 13-7/8" | 13-7/8" | 27-1/2" X 12-7/8" |

Minimum firebox openings are for D surrounds. For all other surrounds, add 1 3/8 to height and width and 3/4 to minimum depth.



| MODEL | A | B | C | D | E | F | G |
|-------|---------|---------|---------|---------|---------|---------|---------|
| QFI35 | 23-1/2" | 34-5/8" | 31-5/8" | 15-3/4" | 24" | 21-1/8" | 15-1/8" |
| QFI30 | 20-1/4" | 30-1/2" | 27-1/2" | 12-7/8" | 20-1/2" | 17-5/8" | 13-7/8" |

CLIMATE ZONE MAP



Heating Capacity by Climate Zone*

| INSERT | | ZONE 1 | ZONE 2 | ZONE 3 | ZONE 4 |
|--------|----|--------|--------|--------|--------|
| QFI35 | NG | 795 | 925 | 1,200 | 1,520 |
| QFI30 | NG | 765 | 895 | 1,165 | 1,480 |

Zone measurements in square feet. Heating capacity (in square feet) is a guideline only and may differ slightly due to climate, building construction and condition, amount and quality of insulation, location of the heater, and air movement in the room. BTUs will vary depending on the type of fuel used.

GAS EFFICIENCIES

Steady State - Since most homeowners use their appliance for an extended time while they are in the room, Steady State measure how efficiently your appliance converts fuel to heat once it is warmed up and running in a "steady state".

AFUE - AFUE rating is more typically used with appliances, like your furnace, that continually cycle on and off to maintain a constant temperature.

EnerGuide (CSA P.4.1-02) - EnerGuide is a rating used in Canada to measure annual efficiency.

| INSERT | U. S. EFFICIENCIES | | | | CANADA ENERGUIDE | |
|--------|--------------------|-------|-------|-------|------------------|-------|
| | Steady State | | AFUE | | CSA P.4.1-02 | |
| | NG | LP | NG | LP | NG | LP |
| QFI35 | 78.5% | 79.0% | 73.5% | 76.2% | 72.2% | 76.1% |
| QFI30 | 84.1% | 83.9% | 73.2% | 73.4% | 72.7% | 71.7% |

QUADRA-FIRE[®]
NOTHING BURNS LIKE A QUAD

A brand of Hearth & Home Technologies[®]

1445 North Highway, Colville, WA 99114
www.quadrafire.com | 800-926-4356

Available From:

Limited Lifetime Warranty**

The strongest in the industry, Quadra-Fire provides a limited lifetime warranty on the most important aspects: firebox and heat exchanger.

** For full warranty details go to www.quadrafire.com

IMPORTANT - READ BEFORE YOU INSTALL!

Refer to the Owner/Installation Manual for complete clearance requirements and specifications. The images and descriptions in this brochure are provided to assist you in product selection only.

Quadra-Fire is a registered trademark of Hearth & Home Technologies. Product specifications and pricing subject to change without notice.

